



# Ceramic Resonator - CRB

**Pin Type - 13.5 x 3.8 x 14.5mm max**

## • Features

- Low cost & wide applications
- Industrial standard
- RoHS compliant

## • General Specification

Part Number	CRB190D to CRB249D	CRB375P to CRB429P	CRB430E to CRB509E	CRB510P to CRB699P	CRB700J to CRB999J	CRB1000J to CRB1250J
Frequency Range in KHz	190.0 - 374.0	375.0 - 429.0	430.0 - 509.0	510.0 - 699.0	700.0 - 999.0	1000 to 1250
Frequency Stability at 25°C	± 1.0KHz	± 1.0KHz	± 2.0KHz	± 2.0KHz	±0.5KHz	±0.5KHz
Frequency Stability vs Temperature Range	±0.3%	±0.3%	±0.3%	±0.3%	±0.3%	±0.3%
Operating Temperature Range	-20°C to +80 °C					
Storage Temperature Range	-35°C to +85 °C					
Series Resistance ESR	20Ω	20Ω	20Ω	30Ω	70Ω	100Ω
Operating Voltage	5V					
Aging for 10 years	±0.3%					
Built-in Capacitor (C1/C2)	330/470pF(190.0 - 249.0KHz) // 220/470pF(250.0 - 374.0KHz) 120/470pF(375.0 - 400.0KHz) // 100/100pF(401.0 - 1250.0KHz)					

## • Holder and Type Codes

CR = Ceramic Resonator	B = 2pins, no built-in capacitor
------------------------	----------------------------------

## • Marking

Part number.

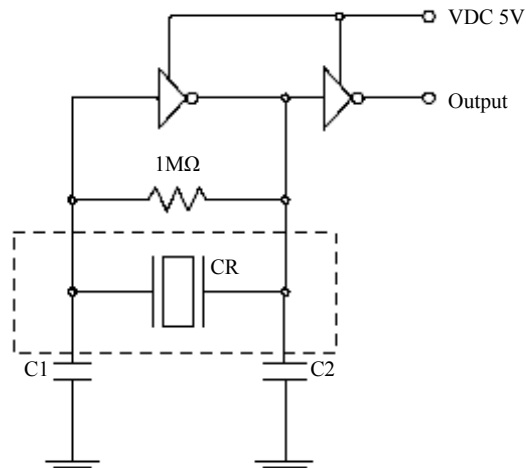
## • Ordering Information

Holder	Type	Frequency	Code For Frequency Range
CR=Ceramic Resonator	B=KHz (2pins, no built-in capacitor )		D=190.0 - 374.0 P=375.0 - 429.0 E=430.0 - 509.0 P=510.0 - 699.0 J=700.0 - 125.0

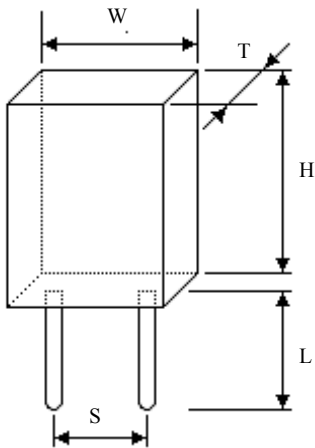
For Example: CRB190D

# Ceramic Resonator - CRT

## • Test Circuit



## • Dimensions



Frequency	W	T	H	S	L
190-249K	13.5	3.8	14.5	10.1	9.0
250-374K	10.8	3.8	12.2	7.1	6.7
375-429K	8.0	3.3	9.0	5.0	3.5
430-519K	7.5	3.3	8.5	5.0	3.5
520-699K	7.5	2.8	7.2	5.0	3.5
700-1250K	5.0	2.2	6.0	2.5	3.5

in mm

## • Packing

Bulk.

## • Reflow Soldering Profile

