



Ceramic Resonator - CRT

Pin Type - 10.0 x 10.0 x 5.0

• Features

- Low cost & wide applications
- Industrial standard
- RoHS compliant

• General Specification

Type	CRT/ MG	CRT/ MT	CRT / MX
	3pins, with built-in capacitor		
Frequency Range	1.80 to 6.00MHz	6.01 to 13.00MHz	13.01 to 60.00MHz
Frequency Stability at 25°C	0.50%	0.50%	±0.5%
Frequency Stability vs Temperature Range	±0.3%	±0.3%	±0.3%
Operating Temperature Range	-20°C to +80°C	-20°C to +80°C	-20°C to +80°C
Storage Temperature Range	-35°C to +85°C	-35°C to +85°C	-35°C to +85°C
Series Resistance ESR	100Ω	30Ω	40Ω
Operating Voltage	5V	5V	5V
Aging for 10 years	±0.3%	±0.3%	±0.3%
Built-in Capacitor (C1, C2)	No	No	No

• Holder and Type Codes

CR = Ceramic Resonator	T = 3pins, with built-in capacitor
------------------------	------------------------------------

• Lead Type Code

Blank = N/A

• Vibration Mode Codes

G = Thickness Shear	T = Thickness Expander	X = Thickness Expander (3rd OT)
---------------------	------------------------	---------------------------------

• Frequency Stability vs Temperature Codes

1 = ±0.1%	2 = ±0.2%	3 = ±0.3%	5 = ±0.5%
-----------	-----------	-----------	-----------

Ceramic Resonator - CRT

• Loading Capacitance Codes (pF)

1 = 5	2 = 6	3 = 15	4 = 22
5 = 30	6 = 47	8 = 100	

• Marking

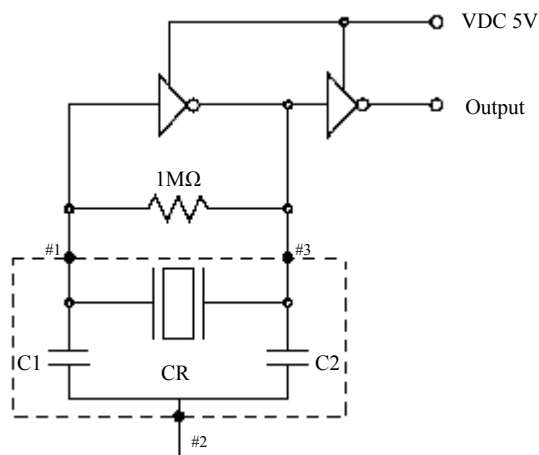
Frequency + M (MHz)

• Ordering Information

Holder	Type	Lead Type	Frequency	Vibration Mode	Frequency Stability vs Temp	Load Capacitance	Packing
			(MHz)			(pF)	
See Tables			xx.xxxM	See Tables			Blank=N/A
	T=3pins, with built-in				±0.3%	30	
CR	T			G	3	5	

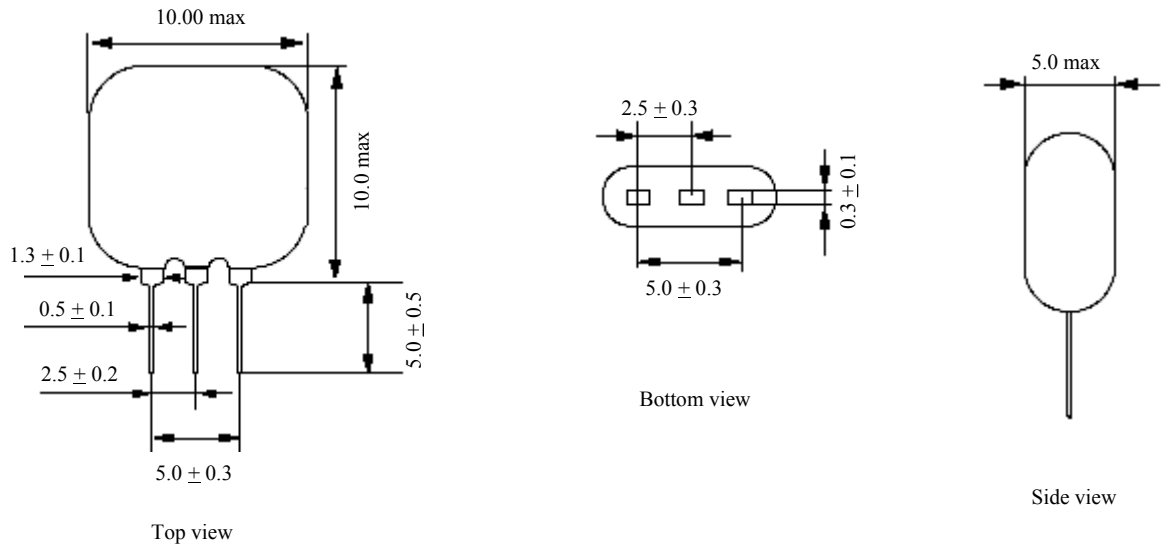
For Example: CRT3.58MG35

• Test Circuit



Ceramic Resonator - CRT

• Dimensions



• Packing

Bulk.

• Reflow Soldering Profile

